

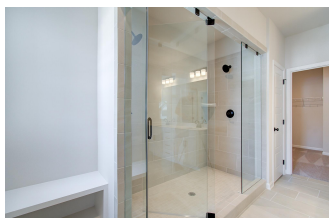
# The Medlock



*More to Come Home to...*



**2 Story**  
**3 Bedroom / 2.5 Baths**  
**Approx. 1,850 sq ft**



These photos DO contain many upgrades, please see agent for prices.

In a continuous effort by Chafin Communities to improve the quality of your home, we reserve the right to change features, options, plans, and specifications without notice. **Floor plans and elevation renderings are artists' concepts for marketing purposes only AND DO INCLUDE UPGRADES not available at all communities - see sales agent for details.** Elevations and floor plans will vary based on actual homesite (Chafin Communities may be required to build the home in a mirror image to the floor plans shown) due to construction and/or building design requirements of the homesite. Significant changes may be made during or after the construction of the model homes. Chafin Communities reserves the right to modify, relocate or eliminate any or all of the features, specifications, plan utilities, design, or shape thereof without notice or obligations to the purchaser. Please see your onsite sales associate for additional information.

**CHAFIN**  
**COMMUNITIES**  
*More To Come Home to...*  
*A Berkshire Hathaway Company*



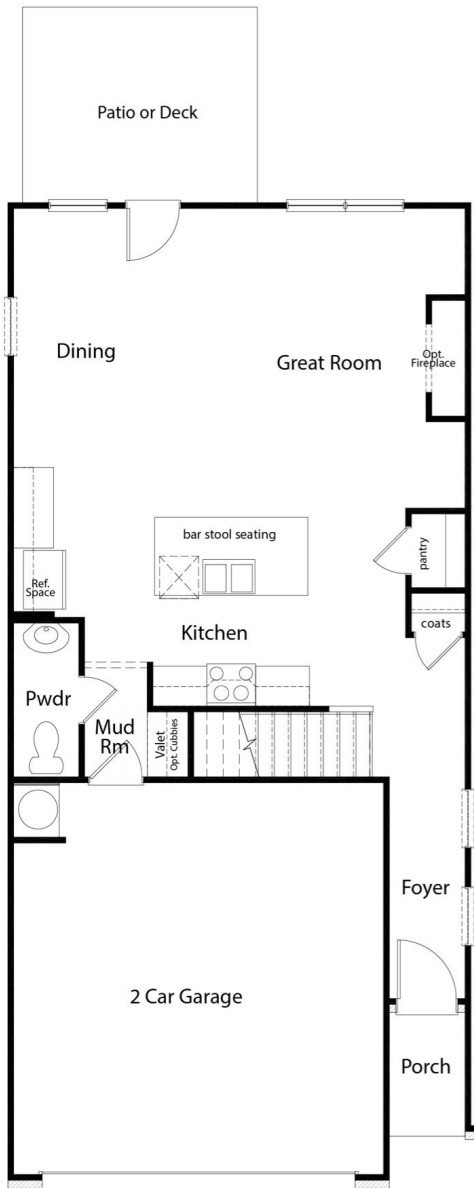
**CHAFINCOMMUNITIES.COM**

Subject to errors, omissions, and changes without notice. Believed accurate, but NOT warranted.

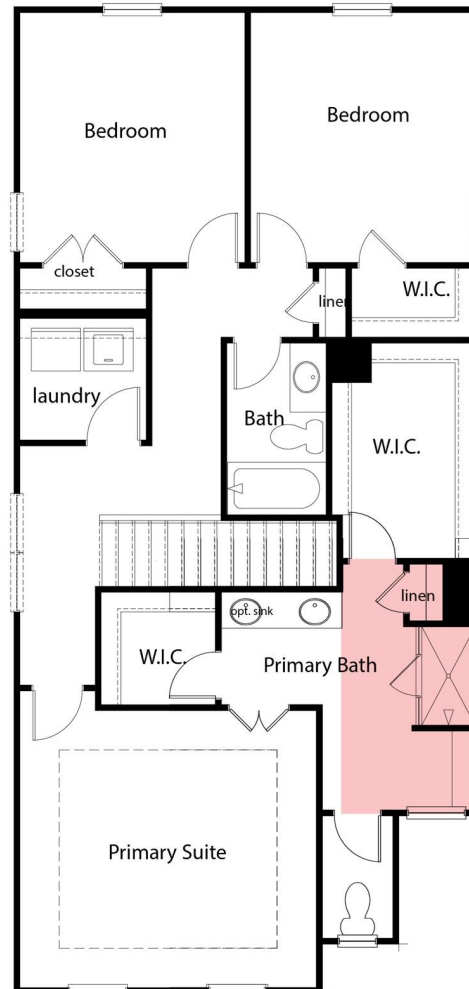
*More to Come Home to...*

# The Medlock

2 Story / 3 Bedroom / 2.5 Baths / Approx. 1,850 sq ft

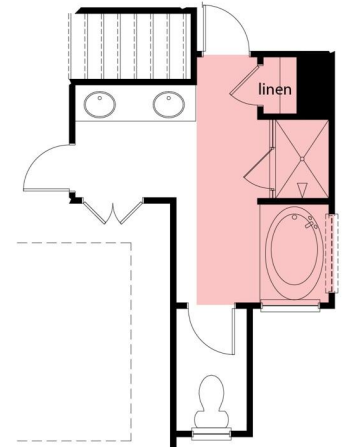


**First Floor**

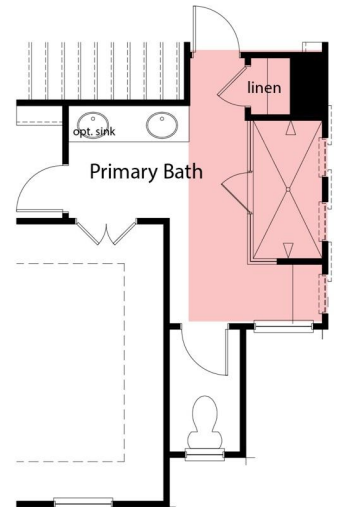


**Second Floor**

**Primary Bath Standard layout will vary per community**



**Opt Primary Bath with Tub & Shower**



**Opt Primary Bath with Enlarged Shower**

In a continuous effort by Chafin Communities to improve the quality of your home, we reserve the right to change features, options, plans, and specifications without notice. **Floor plans and elevation renderings are artists' concepts for marketing purposes only AND DO INCLUDE UPGRADES not available at all communities - see sales agent for details.** Elevations and floor plans will vary based on actual homesite (Chafin Communities may be required to build the home in a mirror image to the floor plans shown) due to construction and/or building design requirements of the homesite. Significant changes may be made during or after the construction of the model homes. Chafin Communities reserves the right to modify, relocate or eliminate any or all of the features, specifications, plan utilities, design, or shape thereof without notice or obligations to the purchaser. Please see your onsite sales associate for additional information.

**CHAFIN**  
COMMUNITIES  
*More To Come Home to...*  
A Berkshire Hathaway Company



**CHAFINCOMMUNITIES.COM**

Subject to errors, omissions, and changes without notice. Believed accurate, but NOT warranted.