

The Ashford

3BD/2BA



Ranch with Primary Suite on Main

Standard:

3 Bedrooms & 2 Baths

- Mini-Mud Room & Optional Cubicles
- Dining Area off Kitchen & Great Room
- Laundry on Main is extra large with 2 doors

Options:

Covered Rear Porch Extension

In a continuous effort by Chafin Communities to improve the quality of your home, we reserve the right to change features, options, plans and specifications without notice. Floor plans and elevation renderings are conceptual artists' renderings for marketing purposes only. Elevations and floor plans may vary based on actual homesite and Chafin Communities may be required to build the home in a mirror image to the floor plans shown, including the garage, due to construction and building design requirements of the homesite. Significant changes may be made during or after the construction of the model homes. Chafin Communities reserves the right to modify, relocate or eliminate any or all of the features, specifications, plan utilities, design or shape thereof without notice or obligations to the purchaser. Please see your onsite sales associate for additional information.
7/17/2020

Bedrooms Baths

Main:	3	2
Total:	3	2

1,870 sq ft



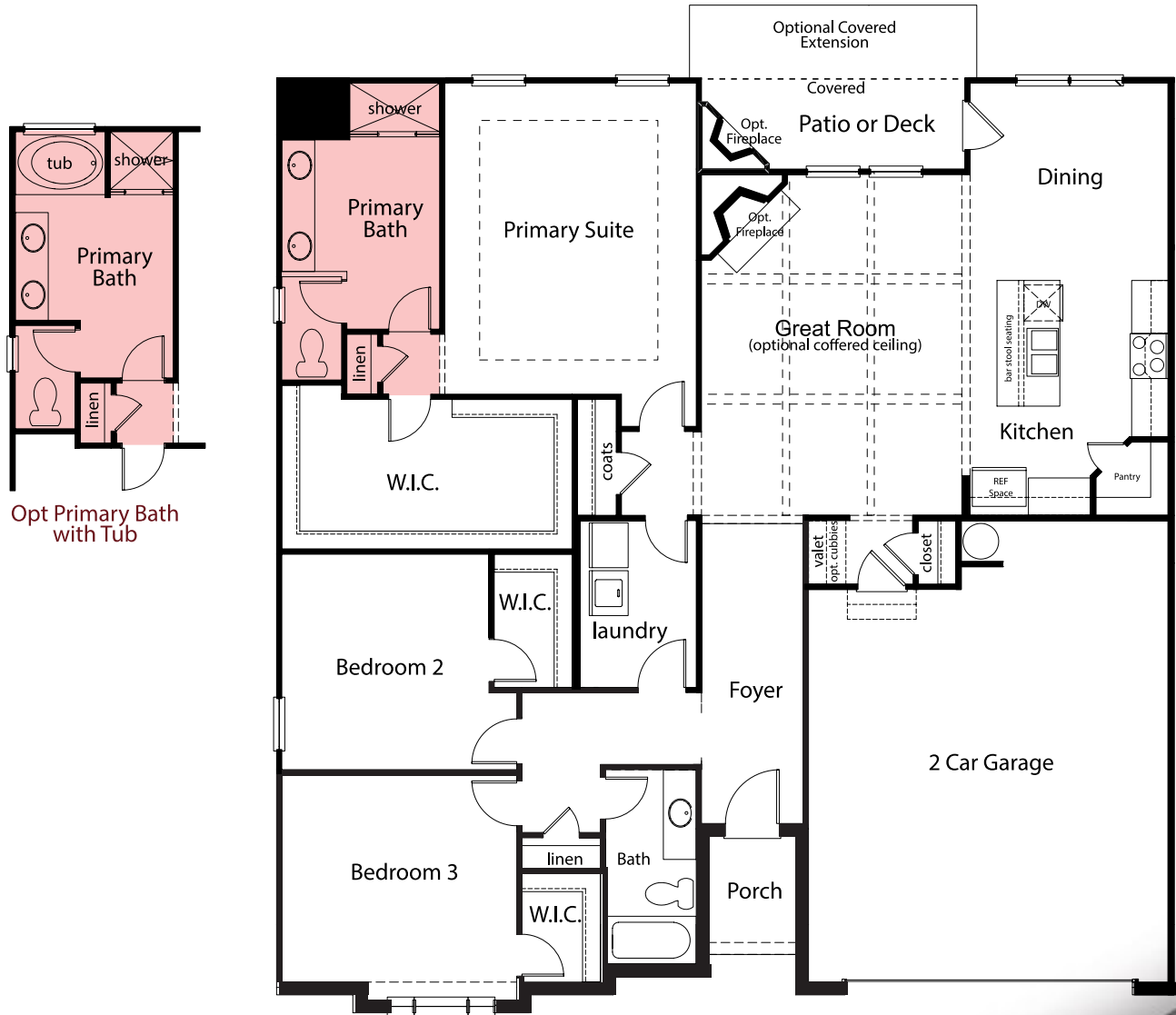
[WWW.CHAFINCOMMUNITIES.COM](http://www.chafincommunities.com)

Subject to errors, omissions, and changes without prior notice. Believed accurate, but not warranted.

The Ashford

3 Bedrooms / 2 Baths

Approx. 1,870 sf



Opt Primary Bath with Tub

Note: Basement is slightly different

First Floor

In a continuous effort by Chafin Communities to improve the quality of your home, we reserve the right to change features, options, plans and specifications without notice. Floor plans and elevation renderings are conceptual artists' renderings for marketing purposes only. Elevations and floor plans may vary based on actual homesite and Chafin Communities may be required to build the home in a mirror image to the floor plans shown, including the garage, due to construction and building design requirements of the homesite. Significant changes may be made during or after the construction of the model homes. Chafin Communities reserves the right to modify, relocate or eliminate any or all of the features, specifications, plan utilities, design or shape thereof without notice or obligations to the purchaser. Please see your onsite sales associate for additional information.

7/17/2020



WWW.CHAFINCOMMUNITIES.COM

Subject to errors, omissions, and changes without prior notice. Believed accurate, but not warranted.

The Ashford

3 Bedrooms / 2 Baths

Approx. 1,870 sf



Elevation A



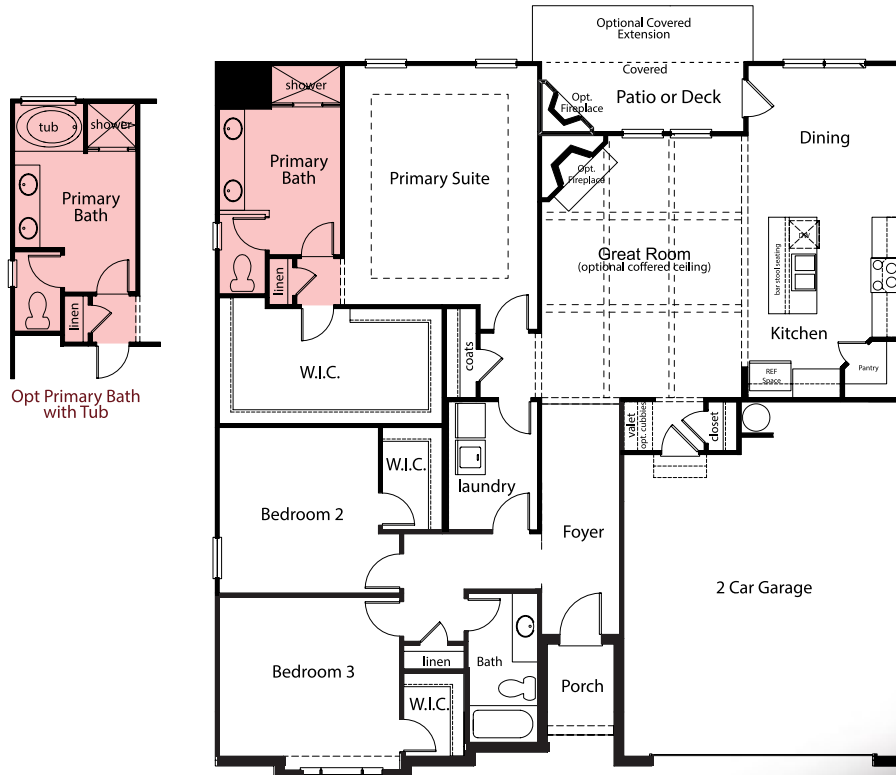
Elevation B



Elevation C



Elevation D



Note: Basement is slightly different

First Floor

In a continuous effort by Chafin Communities to improve the quality of your home, we reserve the right to change features, options, plans and specifications without notice. Floor plans and elevation renderings are conceptual artists' renderings for marketing purposes only. Elevations and floor plans may vary based on actual homesite and Chafin Communities may be required to build the home in a mirror image to the floor plans shown, including the garage, due to construction and building design requirements of the homesite. Significant changes may be made during or after the construction of the model homes. Chafin Communities reserves the right to modify, relocate or eliminate any or all of the features, specifications, plan utilities, design or shape thereof without notice or obligations to the purchaser. Please see your onsite sales associate for additional information.

7/17/2020



WWW.CHAFINCOMMUNITIES.COM

Subject to errors, omissions, and changes without prior notice. Believed accurate, but not warranted.

