

# The Denton

3 BD/2 BA w/Loft  
Single Level  
Living



## Ranch - Single Level Living

Standard:

**3 Bedrooms & 2 Baths**

- One Level Only
- Primary Bath is tub-less with Shower
- Split Bedroom Style
- Laundry on Main

	Bedrooms	Baths
Main::	3	2
Total:	3	2

**1,800 sq ft**

In a continuous effort by Chafin Communities to improve the quality of your home, we reserve the right to change features, options, plans and specifications without notice. Floor plans and elevation renderings are conceptual artists' renderings for marketing purposes only. Elevations and floor plans may vary based on actual homesite and Chafin Communities may be required to build the home in a mirror image to the floor plans shown, including the garage, due to construction and building design requirements of the homesite. Significant changes may be made during or after the construction of the model homes. Chafin Communities reserves the right to modify, relocate or eliminate any or all of the features, specifications, plan utilities, design or shape thereof without notice or obligations to the purchaser. Please see your onsite sales associate for additional information.

7/17/2020

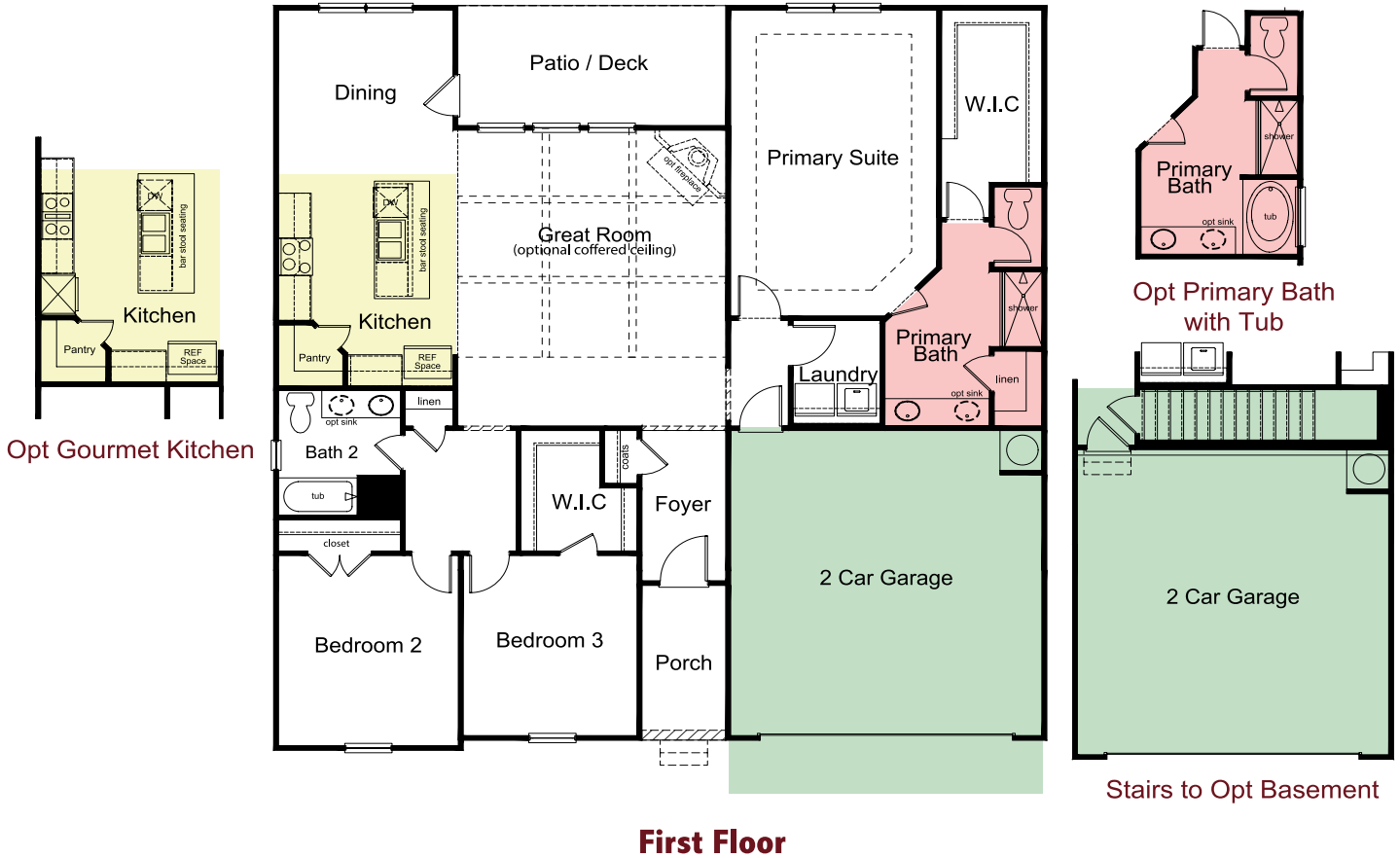


[WWW.CHAFINCOMMUNITIES.COM](http://www.chafincommunities.com)

Subject to errors, omissions, and changes without prior notice. Believed accurate, but not warranted.

# The Denton

3 Bedrooms / 2 Baths  
Approx. 1,800 sf



In a continuous effort by Chafin Communities to improve the quality of your home, we reserve the right to change features, options, plans and specifications without notice. Floor plans and elevation renderings are conceptual artists' renderings for marketing purposes only. Elevations and floor plans may vary based on actual homesite and Chafin Communities may be required to build the home in a mirror image to the floor plans shown, including the garage, due to construction and building design requirements of the homesite. Significant changes may be made during or after the construction of the model homes. Chafin Communities reserves the right to modify, relocate or eliminate any or all of the features, specifications, plan utilities, design or shape thereof without notice or obligations to the purchaser. Please see your onsite sales associate for additional information.

7/17/2020



[WWW.CHAFINCOMMUNITIES.COM](http://WWW.CHAFINCOMMUNITIES.COM)

Subject to errors, omissions, and changes without prior notice. Believed accurate, but not warranted.



# The Denton

3 Bedrooms / 2 Baths

Approx. 1,800 sf



Elevation A



Elevation B



Elevation C



Elevation D



Elevation E



Elevation F



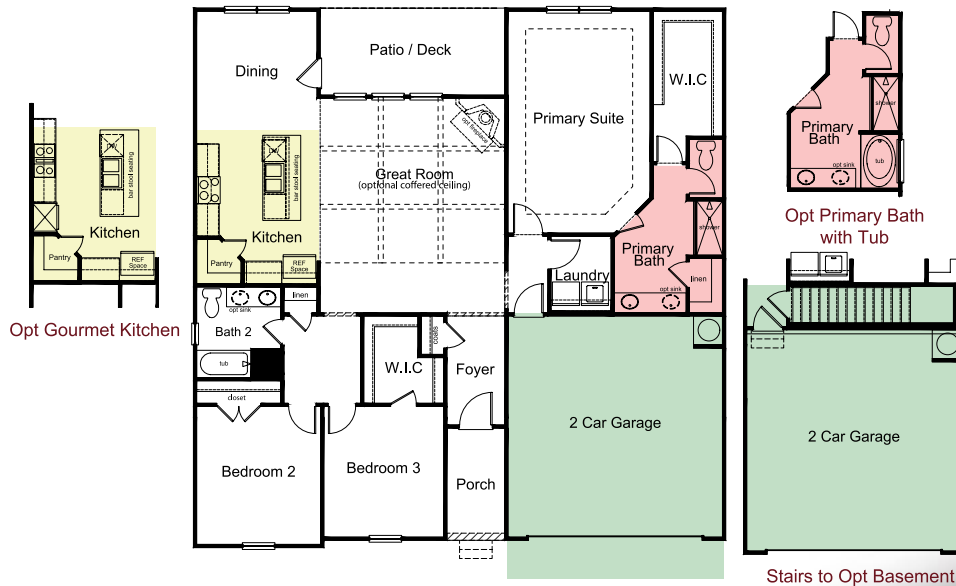
Elevation BM



Elevation DM



Elevation FM



First Floor

In a continuous effort by Chafin Communities to improve the quality of your home, we reserve the right to change features, options, plans and specifications without notice. Floor plans and elevation renderings are conceptual artists' renderings for marketing purposes only. Elevations and floor plans may vary based on actual homesite and Chafin Communities may be required to build the home in a mirror image to the floor plans shown, including the garage, due to construction and building design requirements of the homesite. Significant changes may be made during or after the construction of the model homes. Chafin Communities reserves the right to modify, relocate or eliminate any or all of the features, specifications, plan utilities, design or shape thereof without notice or obligations to the purchaser. Please see your onsite sales associate for additional information.  
7/17/2020



[WWW.CHAFINCOMMUNITIES.COM](http://WWW.CHAFINCOMMUNITIES.COM)

Subject to errors, omissions, and changes without prior notice. Believed accurate, but not warranted.





# The Dresden

4 BD/3.5 BA w/Loft  
Primary on Main  
Opt: 5BD/3.5BA



## 2 Story with Primary Suite on MAIN

Standard:

4 Bedrooms & 3.5 Baths

Loft Up

- Flex Space on Main
- Primary Bath is tub-less with Shower
- Mud Room
- Laundry on Main

### Options:

5th Bedroom Up in lieu of Loft

Formal Dining Room or Study in lieu of Flex Space

In a continuous effort by Chafin Communities to improve the quality of your home, we reserve the right to change features, options, plans and specifications without notice. Floor plans and elevation renderings are conceptual artists' renderings for marketing purposes only. Elevations and floor plans may vary based on actual homesite and Chafin Communities may be required to build the home in a mirror image to the floor plans shown, including the garage, due to construction and building design requirements of the homesite. Significant changes may be made during or after the construction of the model homes. Chafin Communities reserves the right to modify, relocate or eliminate any or all of the features, specifications, plan utilities, design or shape thereof without notice or obligations to the purchaser. Please see your onsite sales associate for additional information.  
7/17/2020

### Bedrooms Baths

Main:	1	1.5
Up:	3-4	2
<b>Total:</b>	<b>4-5</b>	<b>3.5</b>

2,850 sq ft



[WWW.CHAFINCOMMUNITIES.COM](http://WWW.CHAFINCOMMUNITIES.COM)

Subject to errors, omissions, and changes without prior notice. Believed accurate, but not warranted.