

# The Durham

3 BD/ 2.5BA  
with Loft Up  
1,850 sf



*More to Come Home to...*



	Bedrooms	Baths
Main:	0	.5
Up:	3	2
<b>Total:</b>	<b>3</b>	<b>2.5</b>



## Townhomes Primary Suite Up

- Loft Up
- Private Two Car Garage
- Mud Area

### Options:

- Enlarged Shower in Primary Bath
- Tub & Shower in Primary Bath
- Additional Storage ILO Loft Up

**3 Bedrooms / 2.5 Baths • 1,850sf**



Photos, YouTube, and  
3D Interactive Tours Online:  
[Find a Home/Browse Floor Plans](#)

In a continuous effort by Chafin Communities to improve the quality of your home, we reserve the right to change features, options, plans and specifications without notice. Floor plans and elevation renderings are conceptual artists' renderings for marketing purposes only. Elevations and floor plans may vary based on actual homesite and Chafin Communities may be required to build the home in a mirror image to the floor plans shown, including the garage, due to construction and building design requirements of the homesite. Significant changes may be made during or after the construction of the model homes. Chafin Communities reserves the right to modify, relocate or eliminate any or all of the features, specifications, plan utilities, design or shape thereof without notice or obligations to the purchaser. Please see your onsite sales associate for additional information.  
7/17/2020



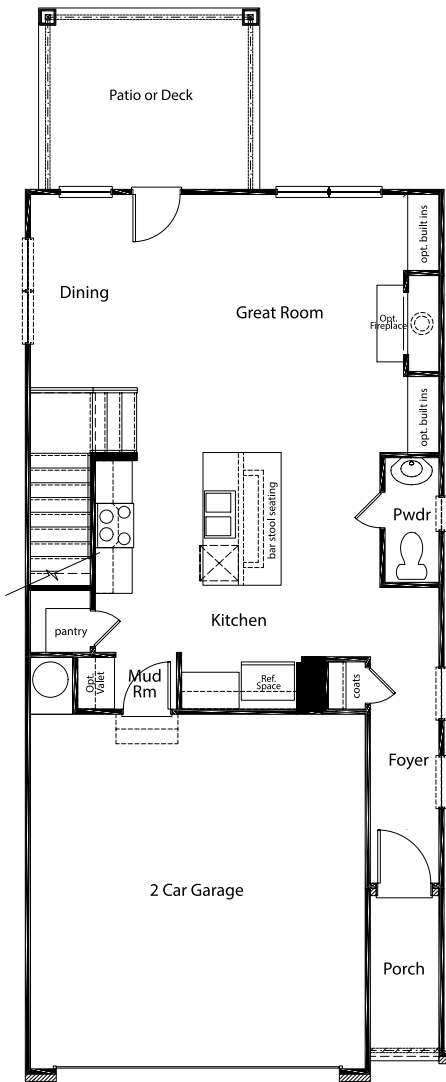
[WWW.CHAFINCOMMUNITIES.COM](http://WWW.CHAFINCOMMUNITIES.COM)

Subject to errors, omissions, and changes without prior notice. Believed accurate, but not warranted.



# The Durham

3 BD/ 2.5BA  
with Loft Up  
Approx. 1,850 sf



**First Floor**



**Second Floor**

In a continuous effort by Chafin Communities to improve the quality of your home, we reserve the right to change features, options, plans and specifications without notice. Floor plans and elevation renderings are conceptual artists' renderings for marketing purposes only. Elevations and floor plans may vary based on actual homesite and Chafin Communities may be required to build the home in a mirror image to the floor plans shown, including the garage, due to construction and building design requirements of the homesite. Significant changes may be made during or after the construction of the model homes. Chafin Communities reserves the right to modify, relocate or eliminate any or all of the features, specifications, plan utilities, design or shape thereof without notice or obligations to the purchaser. Please see your onsite sales associate for additional information.

7/17/2020



[WWW.CHAFINCOMMUNITIES.COM](http://WWW.CHAFINCOMMUNITIES.COM)

Subject to errors, omissions, and changes without prior notice. Believed accurate, but not warranted.

